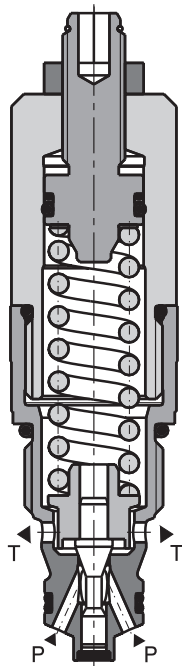


Technical Features

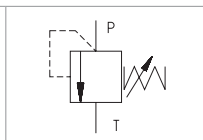
- › Excellent stability throughout flow range with rapid response to dynamic pressure changes
- › Low hysteresis, accurate pressure control and low pressure drop through CFD optimized flow paths
- › Wide pressure range up to 420 bar
- › Hardened precision parts
- › Sharp-edged steel seats for dirt-tolerant performance
- › Leak-free closing, suitable for fast cycling with long life
- › Adjustable by allen key or hand screw
- › In the standard version, the valve is zinc-coated for 240 h protection acc. to ISO 9227

Functional Description

A poppet-type, direct-acting hydraulic relief valve in the form of a screw-in cartridge intended for use as a pressure limiting device for common hydraulic circuit protection. The spring acts on the poppet and presses it onto the valve seat. If the hydraulic pressure is below the pre-set value, the valve is closed. If the hydraulic force exceeds the pre-set value the valve opens and flow passes to the tank port until the system pressure falls below the spring pre-set value and the valve closes again.



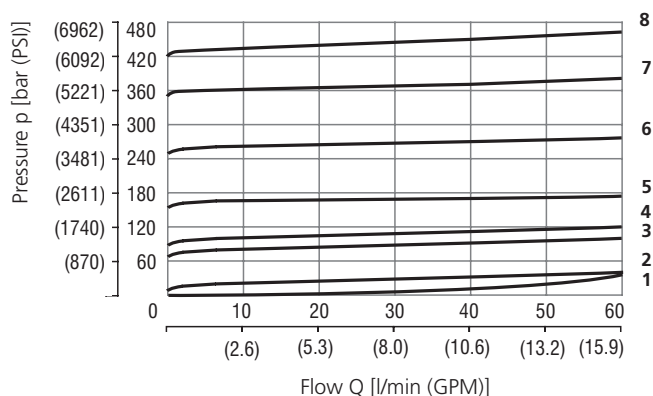
Symbol


Technical Data

Valve size / Cartridge cavity		7/8-14 UNF-2A / B2
Max. flow	l/min (GPM)	60 (15.9)
Max. operating pressure	bar (PSI)	420 (6090)
Max. pressure (port T)	bar (PSI)	250 (3630)
Fluid temperature range (NBR)	°C (°F)	-30 ... +100 (-22 ... 212)
Fluid temperature range (FPM)	°C (°F)	-20 ... +120 (-4 ... 248)
Mass	kg (lbs)	0.25 (0.55)

		Datasheet	Type
General information		GI_0060	Products operating conditions
Valve bodies	In-line mounted	SB_0018	SB-B2*
	Sandwich mounted	SB-04(06)_0028	SB-*B2*
Cavity details / Form tools		SMT_0019	SMT-B2*
Spare parts		SP_8010	

Characteristics measured at $v = 32 \text{ mm}^2/\text{s}$ (156 SUS)

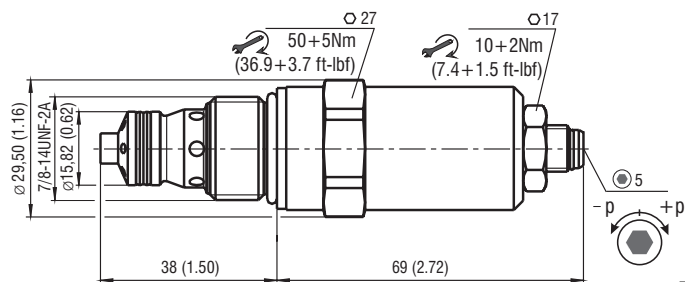
Relief pressure related to flow rate


	Pressure range
8	42
7	35
6	25
5	16
4	10
3	6
2	2
1	Min. pressure setting

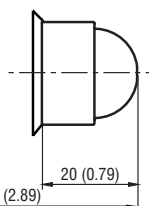


Dimensions in millimeters (inches)

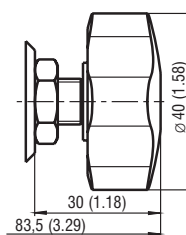
Model S



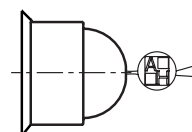
Model T



Model RP



Model L



Ordering Code

SR1A-B2 / -

Pressure relief valve, poppet-type, direct-acting 7/8 -14 UNF

Model High performance

Pressure range
 up to 25 bar (360 PSI) **2**
 up to 63 bar (910 PSI) **6**
 up to 100 bar (1450 PSI) **10**
 up to 160 bar (2320 PSI) **16**
 up to 250 bar (3630 PSI) **25**
 up to 350 bar (5080 PSI) **35**
 up to 420 bar (6090 PSI) **42**

H

Surface treatment
A zinc-coated (ZnCr-3), ISO 9227 (240 h)
B zinc-coated (ZnNi), ISO 9227 (520 h)

No designation
V

Seals
 NBR
 FPM (Viton)

Adjustment option
S allen key (hex. 5), without protective cap
T allen key (hex. 5), with protective cap
RP hand screw, plastic
L allen key (hex. 5), with protective cap, sealable (lockwire holes)



ОАО "Белпромимпэкс"

www.bpi-hydro.by
 gidro@bpi.by

Контакты:

Тел./факс: (017) 346-80-64

Моб. Velcom: (029) 102-14-14