

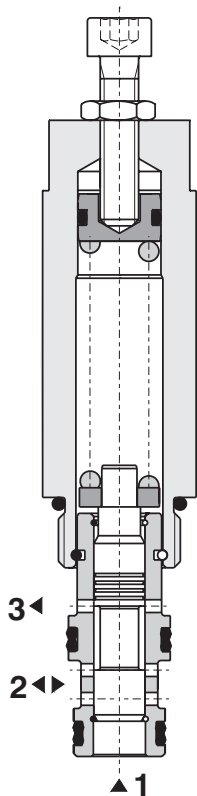
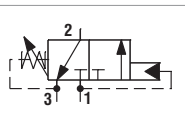
Technical Features

- › Excellent stability throughout flow range with rapid response to dynamic pressure changes
- › Low hysteresis, accurate pressure control and low pressure drop
- › Pressure range up to 350 bar
- › Hardened precision parts
- › Adjustable by allen key
- › In the standard version, the valve is zinc-coated for 240 h protection acc. to ISO 9227

Functional Description

A direct-acting, spool-type hydraulic sequence valve in the form of a screw-in cartridge with internal pilot and spring chamber drain. The valve directs the fluid to the secondary circuit when the input pressure exceeds the pre-set pressure. In the neutral position, the valve blocks flow at port 1 (inlet), while allowing flow to pass from port 2 to 3 (tank). When the pressure on port 1 reaches the pre-set pressure, the cartridge opens the connection between port 1 to 2. Back pressure on port 3 adds to the pressure pre-set by the spring.

Symbol


Technical Data

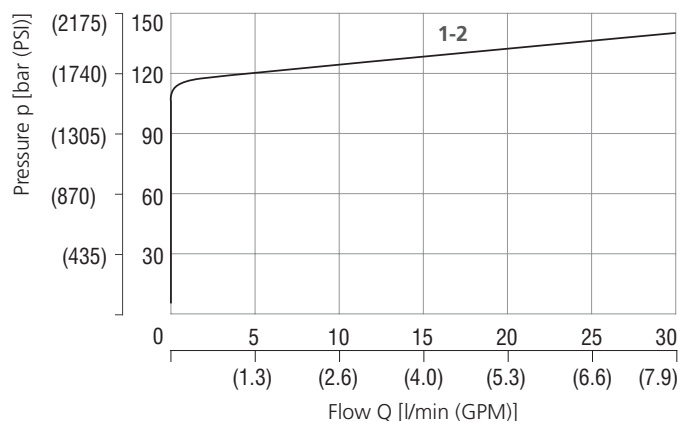
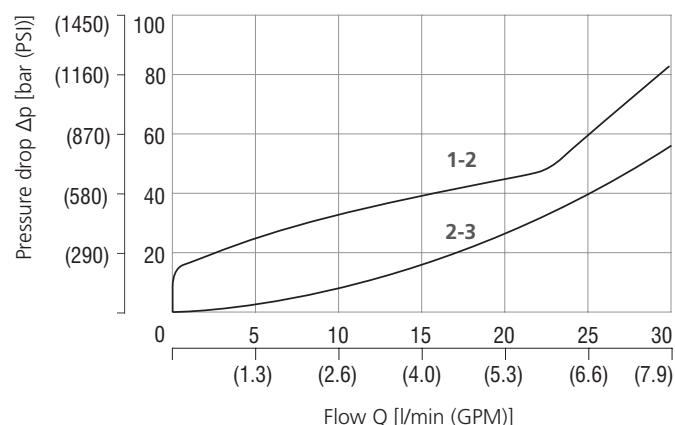
Valve size / Cartridge cavity		3/4-16 UNF-2A / A3
Max. flow	l/min (GPM)	30 (7.9)
Max. operating pressure	bar (PSI)	350 (5080)
Max. preset pressure	bar (PSI)	240 (3480)
Fluid temperature range (NBR)	°C (°F)	-30 ... +100 (-22 ... 212)
Fluid temperature range (FPM)	°C (°F)	-20 ... +120 (-4 ... 248)
Mass	kg (lbs)	0.23 (0.51)

		Datasheet	Type
General information		GI_0060	Products and operating conditions
Valve bodies	In-line mounted	SB_0018	SB-A3*
	Sandwich mounted	SB-04(06)_0028	SB-*A3*
Cavity details / Form tools		SMT_0019	SMT-A3*
Spare parts		SP_8010	

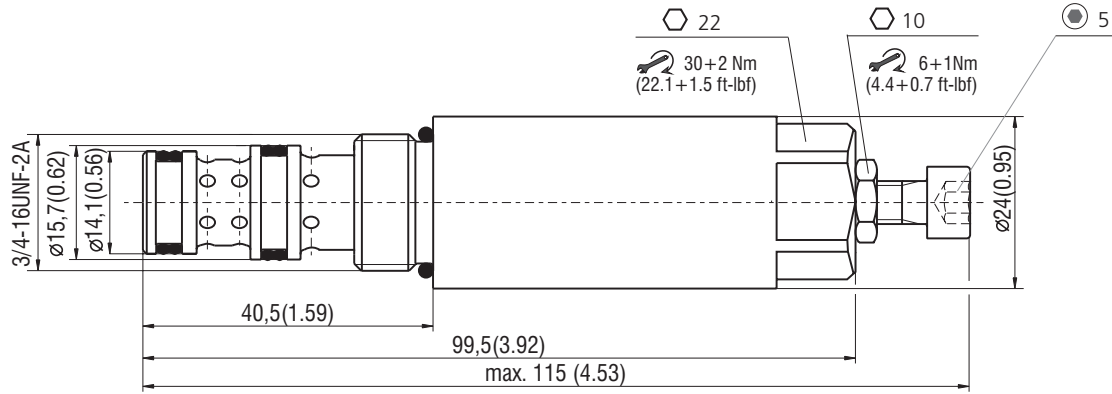
Characteristics measured at $v = 32 \text{ mm}^2/\text{s}$ (156 SUS)

Relief pressure related to flow rate

Example of factory preset valve,
at 120 bar (1740 PSI), 5 l/min (1.3 GPM)


Pressure drop related to flow rate


Dimensions in millimeters (inches)



Ordering Code

SS4A-A3 / -

Sequence valve, internal pilot and drain,
spool-type, direct-acting
3/4-16UNF

Surface treatment
A zinc-coated (ZnCr-3), ISO 9227 (240 h)
B zinc-coated (ZnNi), ISO 9227 (520 h)

Model
High performance

H

No designation
V

Seals
NBR
FPM (Viton)

Pressure range
10 - 50 bar (150 - 730 PSI)
50 - 240 bar (730 - 3480 PSI)

5
24

S Adjustment option
allen key (hex. 5), without protective cap

