

DWG10型电磁换向阀

DWG10 SERIES SOLENOID OPERATED DIRECTIONAL CONTROL VALVES



DWG10型方向控制阀是电磁铁操纵的换向阀，用以控制油液的开启、停止和换向。

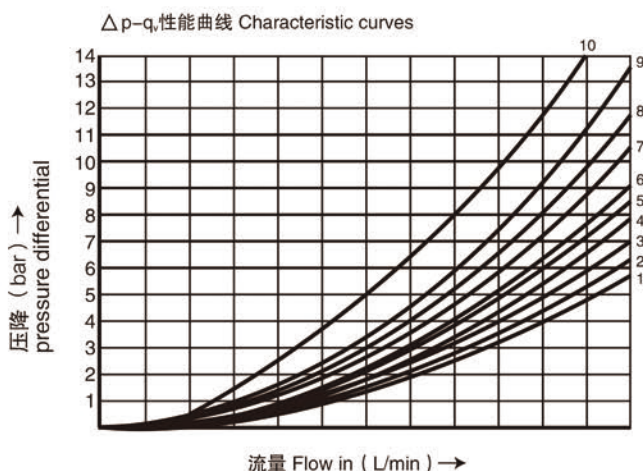
DWG10 series directional control valves are solenoid operated directional spool valves, these valves are used to the start, stop and direct flow.

▶ 技术参数 Technical data

通径 Size		10
最大流量(L/min) Max. flow rate(L/min)		120
工作压力(MPa) Operating pressure(MPa)		A、B、P油口31.5 / A、B、P oil port 31.5 T油口16 / T oil port 16
重量(千克) Weight(KGS)	单头	4.6
	双头	6
阀体(材料)表面处理 Valve body (Material) Surface treatment		铸件 表面磷化处理 casting phosphating surface
油液清洁度/Oil cleanliness		NAS1638 9级和ISO4406 20/18/15级 NAS1638 class 9 and ISO4406 class 20/18/15

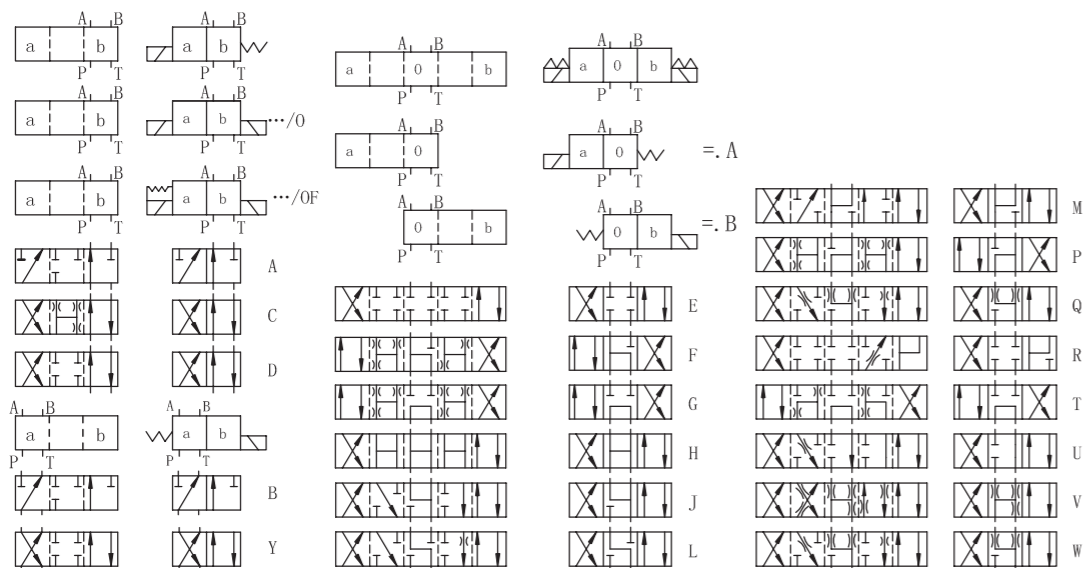
▶ 特性曲线 (在使用 HLP46, $\vartheta_{油}=40^{\circ}\text{C} \pm 5^{\circ}\text{C}$ 时测得)

Characteristic curves (measured with HLP46, $\vartheta_{oil}=40^{\circ}\text{C} \pm 5^{\circ}\text{C}$)

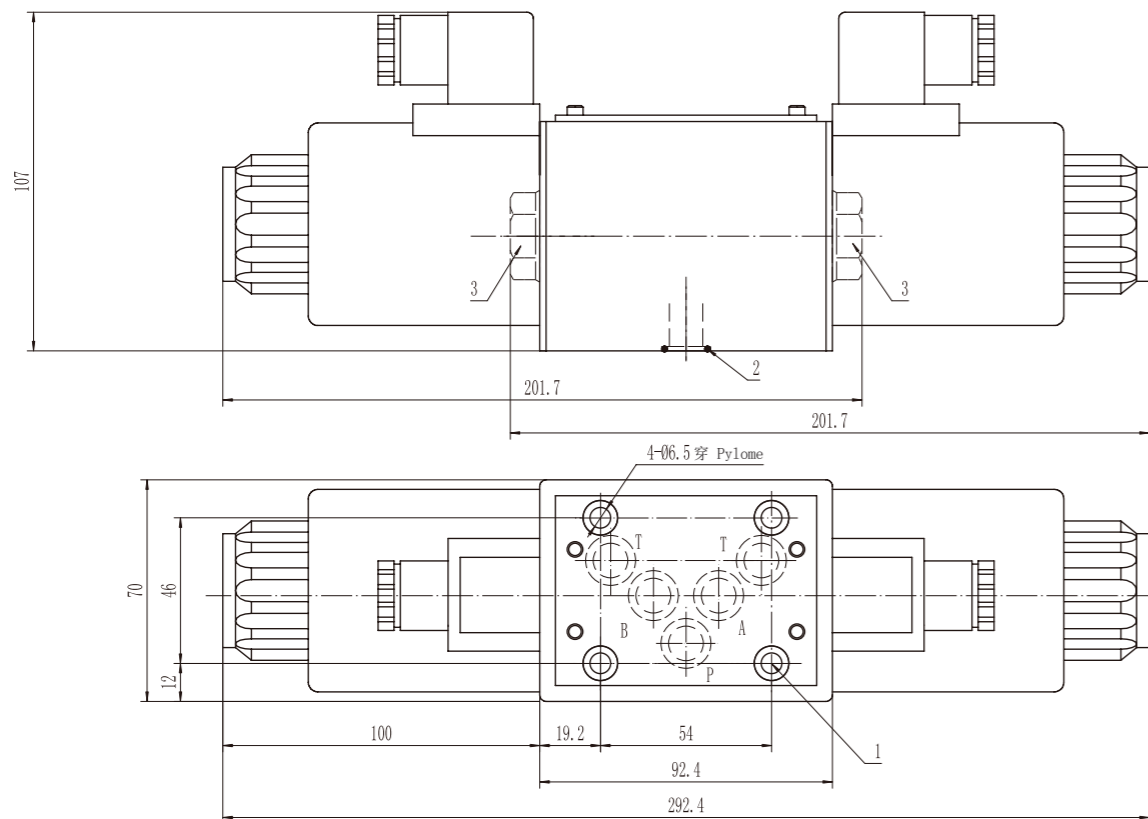


机能符号 Spool symbol	流向 Flow direction				
	P-A	P-B	A-T	B-T	
A; B	3	3	-	-	
C	3	3	4	5	
D; Y	5	5	6	6	
E	1	1	4	4	
F	2	3	7	4	
G	3	3	6	7	
H	1	1	6	7	
J	1	1	3	3	
L	2	2	3	5	
M	1	1	4	5	
P	4	2	5	7	
Q	1	2	1	3	
R	3	6	4	-	
T	3	3	6	7	
U, V	2	2	3	3	
W	2	2	4	5	
接通位置 on-positon	P-A	B-A	A-T	P-T	
R	-	9	-	-	
	P-A	P-B	B-T	A-T	P-T
F	4	-	-	9	9
9	-	5	8	-	10
G, T	-	-	-	-	9
H	-	-	-	-	3

机能符号 Spool symbols

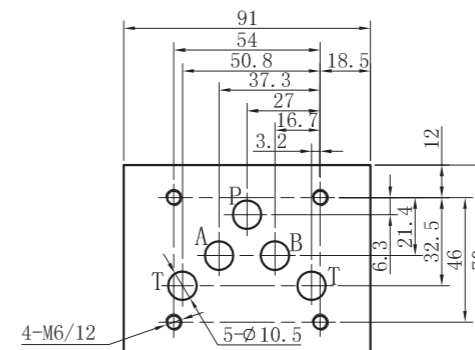


DWG10外型尺寸 DWG10 Subplate Installation Dimensions



- | | |
|---|--|
| 1、阀固定螺丝:
4个M6X40 GB/T70.1-12.9级
拧紧扭矩Ma=15.5Nm | 1.Valve's set screw:
4 of M6 x 40 GB/T70.1-12.9
Tightening torque Ma=15.5Nm. |
| 2、O型圈Φ16X1.9 | 2.O-ring φ 16 x 1.9 |
| 3、用于1个电磁铁阀的堵头 | 3.Plug screw for valves with one solenoid. |

DWG10底板安装尺寸 DWG10 Subplate Installation Dimensions



Z1DS10,Z2DS10,Z2FDS10,ZPB10,
ZPR10 安装尺寸相同
Installations are the same with
Z1DS10,Z2SD10,Z2FDS10,ZPB10,
ZPR10

4	DWG	10	E	30	/	*	DC24	Z5L	/	*	*	*
---	-----	----	---	----	---	---	------	-----	---	---	---	---

3=三油口
4=四油口
3=3-way
4=4-way

口径 10 Size 10

机能符号 Spool type

系列号 30=30螺纹连接电磁铁

Series 30=30 Solenoid coils with
thread connection

O=无复位弹簧;OF=带定位器;无=弹簧复位

No code=With spring return;O=Without spring return
OF=Without spring return with deten

电压 Voltage
DC12;DC24 ;AC110;AC220

For further details 附加说明

无=丁晴橡胶 V=氟橡胶
No code=NBR seals
V=FPM seals

无=无插装节流器 B0.8=节流孔径0.8
B10=节流孔径1.0;B12=节流孔径1.2
No code=Without orifice insert
B0.8=Orifice size0.8mm
B10=Orifice size1.0mm
B12=Orifice size1.2mm

Z5L=带灯大方形插头
Z5L=Large quadrate plug with light