



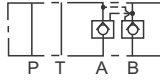
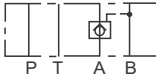
MODÜLER PİLOT KUMANDALI KONTROL VALFLERİ MODULAR PILOT OPERATED CHECK VALVES



A=A Port Only

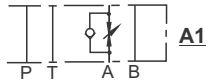
B=B Port Only

W= A &, B Port



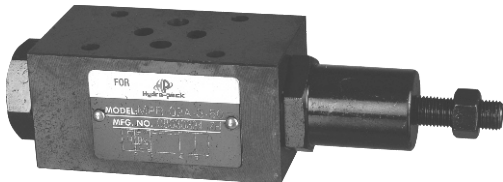
CODE / KOD	TYPE/ TİPİ	MAK. DEBİ MAX.FLOW	MAK. BASINÇ MAX.PRESSURE
MPC-02-A-50-50 A	NG6	40	250
MPC-02-B-50-50 B	NG6	40	250
MPC-02-W-50-50 İKİZ	NG6	40	250
MPC-03-A-50-50 A	NG10	70	250
MPC-03-B-50-50 B	NG10	70	250
MPC-03-W-50-50 İKİZ	NG10	70	250

MODÜLER DEBİLİ KONTROL VALFLERİ MODULAR FLOW CONTROL VALVES



CODE / KOD	TYPE/ TİPİ	MAK. DEBİ MAX.FLOW	MAK. BASINÇ MAX.PRESSURE
MTC-02-A-50-50 A HATTI	NG6	40	250
MTC-02-B-50-50 B HATTI	NG6	40	250
MTC-02-A-50-50 İKİZ	NG6	40	250
MTC-03-A-50-50 A HATTI	NG10	70	250
MTC-03-B-50-50 B HATTI	NG10	70	250
MTC-03-W-50-50 İKİZ	NG10	70	250

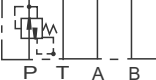
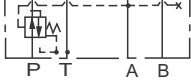
MODÜLER AZALTMALI VALFLER MODULAR REDUCING VALVES



A=A Port Only

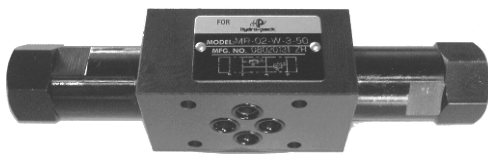
P=P Port Only

B=B Port Only



CODE / KOD	TYPE/ TİPİ	MAK. DEBİ MAX.FLOW	MAK. BASINÇ MAX.PRESSURE
MPR-02-A-3-50 A HATTI	NG6	40	250
MPR-02-B-3-50 B HATTI	NG6	40	250
MPR-02-P-3-50 P HATTI	NG6	40	250
MPR-03-A-3-50 A HATTI	NG10	70	250
MPR-03-B-3-50 B HATTI	NG10	70	250
MPR-03-P-3-50 P HATTI	NG10	70	250

MODÜLER EMNİYET VALFLERİ MODULAR RELIEF VALVES

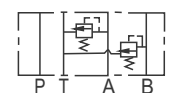
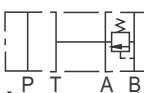
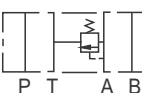
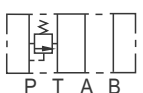


P=Relief P to T

A=Relief A to T

B=Relief B to T

W=Relief A, B to T



CODE / KOD	TYPE/ TİPİ	MAK. DEBİ MAX.FLOW	MAK. BASINÇ MAX.PRESSURE
MR-02-A-3-50 A HATTI	NG6	40	250
MR-02-P-3-50 P HATTI	NG6	40	250
MR-02-B-3-50 B HATTI	NG6	40	250
MR-02-W-3-50 AB HATTI	NG6	40	250
MR-03-A-3-50 A HATTI	NG10	70	250
MR-03-P-3-50 P HATTI	NG10	70	250
MR-03-B-3-50 B HATTI	NG10	70	250
MR-03-W-3-50 AB HATTI	NG10	70	250